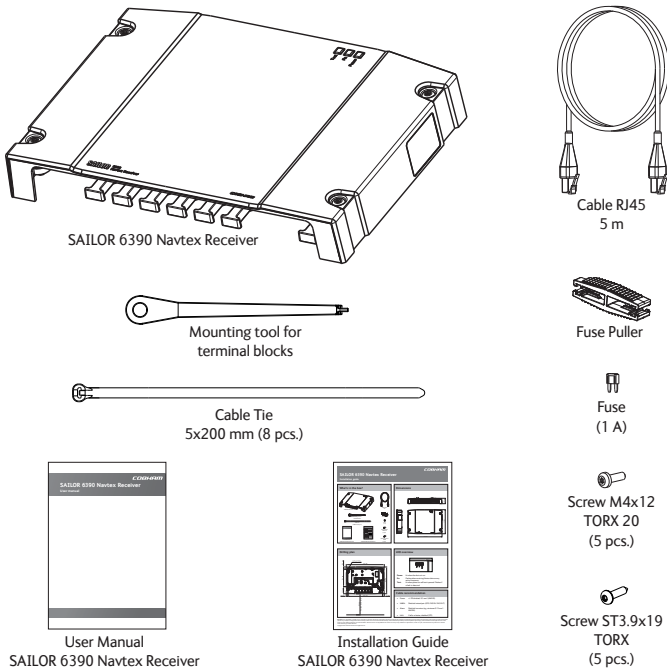


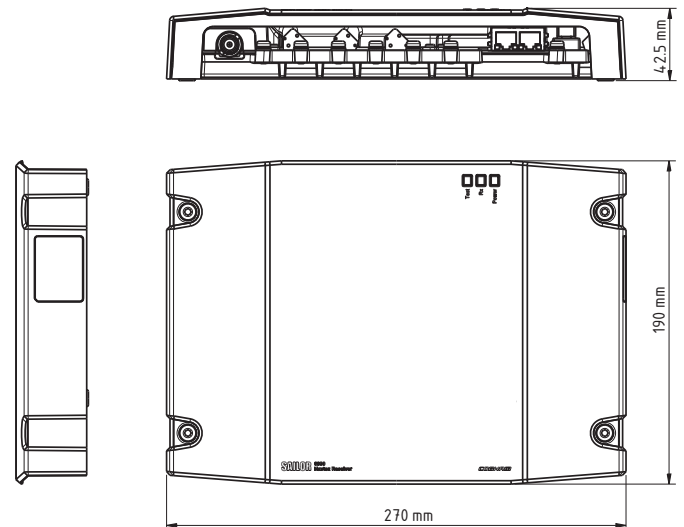
SAILOR 6390 Navtex Receiver

Installation guide

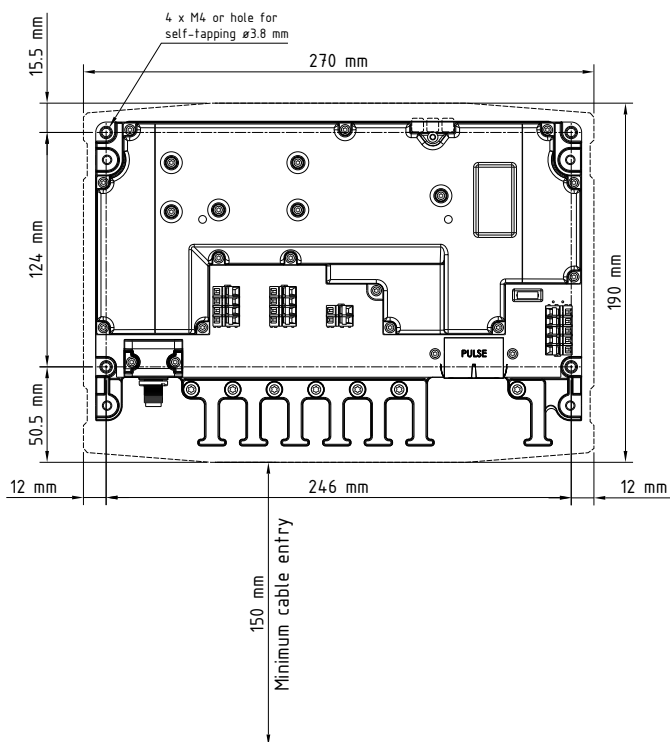
What's in the box?



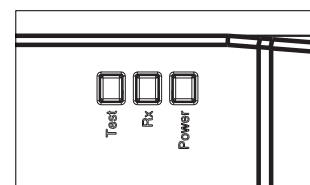
Dimensions



Drilling plan



LED overview

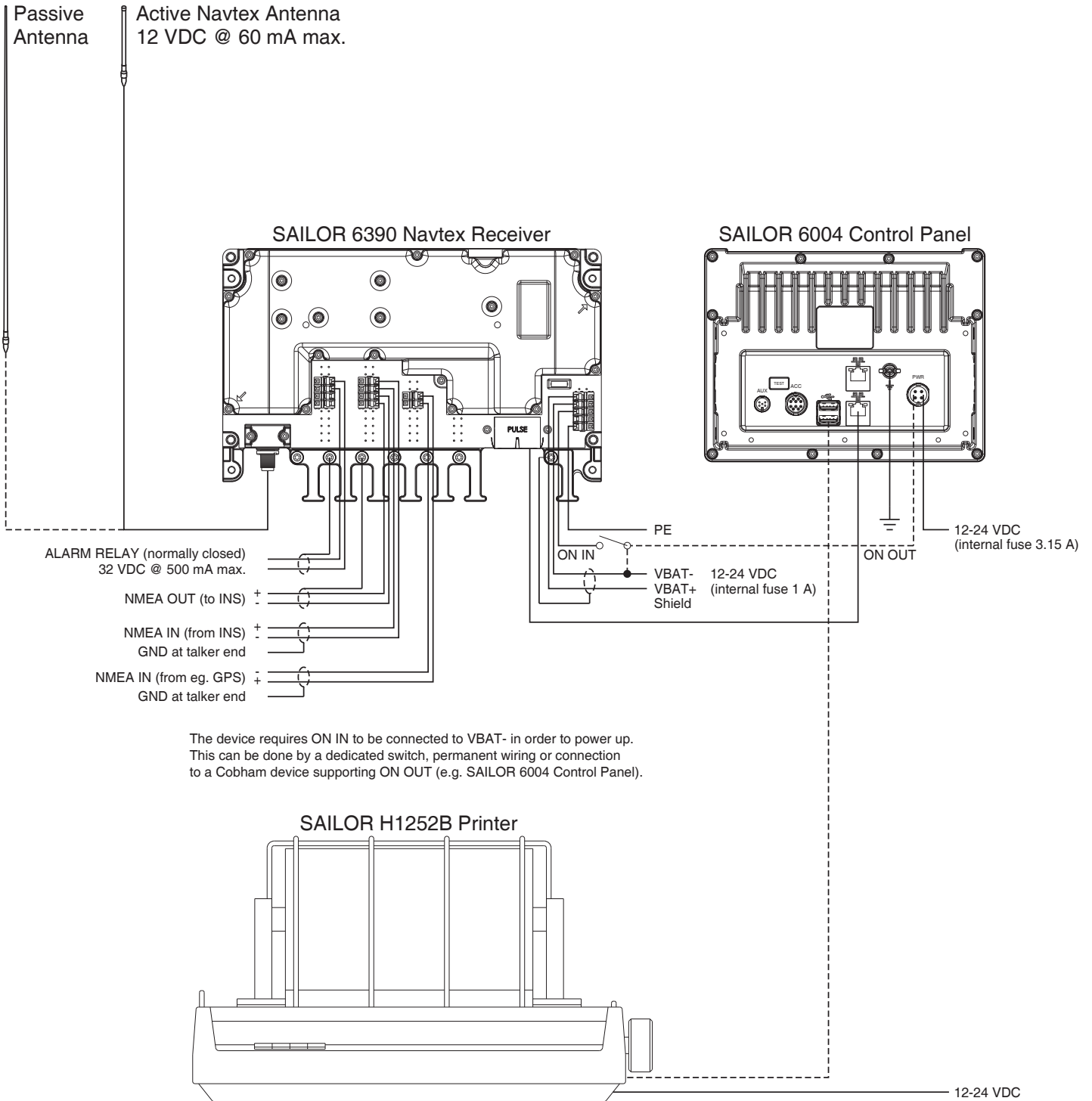


- Power:** Lit when the device is on.
- Rx:** Flashes when receiving Navtex data on any active frequency.
- Test:** Lit when power on self test is passed. Flashes if a fault is detected.

Cable recommendation

- Power:** +/- PE shielded, 0.5 mm² (AWG20)
- NMEA:** Shielded twisted pair (GPS / INS IN / INS OUT)
- Alarm:** Shielded two wires (e.g. minimum 0.15 mm² - AWG26)
- LAN:** Cat5e or better, shielded (STP)

System Configuration - Example



For further information about installation, download the installation manual from www.cobham.com/satcom